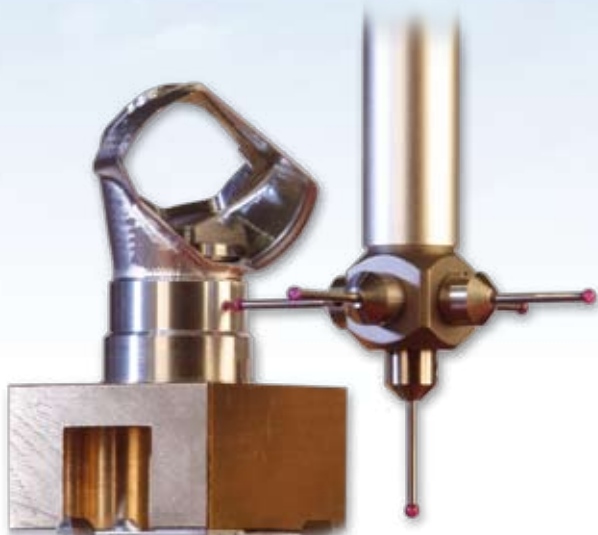


Masters in Improvement

Advanced machining



Hittech Group BV gives its clients access to a wide range of machining processes.

Three of the Hittech Group companies are dedicated entirely to machining a variety of very diverse materials.

The Group's specialisation strategy enables each separate company to specialise in specific materials and processes, while a complete palette of processes can be supplied by the Group as a whole.

From proto to series production.

From accurate to precision.

From Europe to Asia.

Hittech Group makes it.

Unity in specialist diversity

The Hittech Group not only offers clients access to the knowledge and expertise of machining found in its own companies, but also connects them to a sophisticated network of suppliers. Specialisation is the magic word for the separate companies, while Hittech Group ensures the unity required to enable the supply of a total package.

Extremely high precision

The fabrication of precision parts is carried out in conditioned workshops, minimising dimensional changes during the manufacturing process. This facilitates complex processes requiring extremely high precision, with potential tolerances of just 2 µm. The Hittech companies are especially skilled in precision engineering that demands complex combinations of shape and alignment tolerances.

Wide range of materials

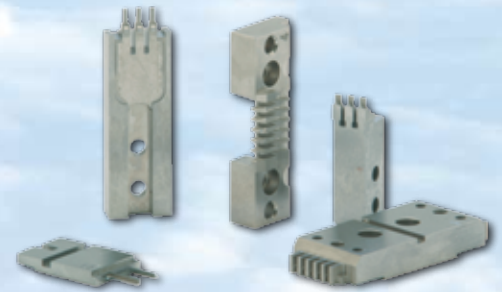
The material know-how within the Hittech Group is not limited to the usual aluminium and steel types. On the contrary, the specialisation strategy has encouraged the machining companies to focus specifically on the properties of the material to be processed. And this enables them to effectively specialise in key materials, a factor that has not only attracted targeted investment over the years, but has also generated comprehensive knowledge and experience of material properties.

Complex processes

Hittech's machining companies are well-known for their skill in the field of extremely complex processes, with combinations of different sub-processes forming the key speciality. This exceptional complexity is only feasible due to years of experience in CAD/CAM, 5-axis milling and working with 3D measuring equipment.

The right cost price

The diversity of our machining companies makes it possible to offer our clients the right cost price for every process. We select the right company on the basis of complexity, precision, series size and material type, guaranteeing you the right cost price for your product. Regardless of whether you require high precision complex prototypes, or relatively simple parts in large numbers, Hittech Group has the right solution. We not only utilize our own production facilities for this purpose, but also exploit our sophisticated network of suppliers in Europe and Asia. Whatever your requirements, you can be confident of Hittech Group's legendary quality assurance.



The Hittech Group consists of:

Hittech Bihca BV • Hittech Comac BV • Hittech Gieterij Nunspeet BV • Hittech Kemetech BV • Hittech MPP BV • Hittech Multin BV • Hittech Assembly Malaysia Sdn Bhd