

Advanced
precision engineering
Special
high-performance metals

Hittech Bihca BV is a leading manufacturer of high precision products, specialising in high-performance metals.

Its knowledge and expertise in processing difficult materials enables Hittech Bihca to manufacture complex products with the highest precision, a mission further enhanced by machinery specially designed for these materials.

From tool steel to Titanium, and Hastelloy to Tungsten,

Hittech Bihca can process it.



Advanced precision engineering

Hittech Bihca specialises in the fabrication of high precision products. Their expertise in complex procedures that demand extremely high precision translates into detailed processes with tolerances down to 2 μm s, even in metals that are difficult to work with.

Precision parts

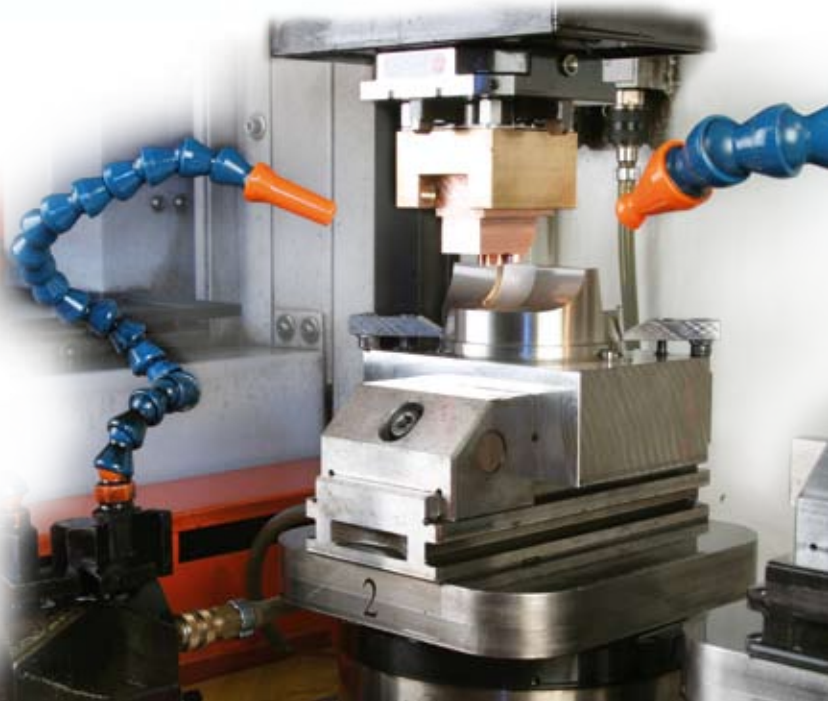
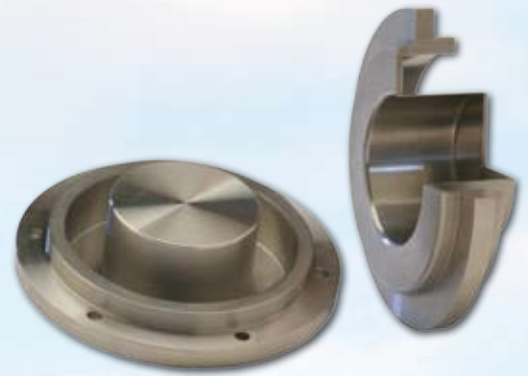
Precision parts are processed in a conditioned workshop, minimising dimensional changes during the required procedures. Hittech Bihca is especially skilled in precision engineering that demands complex combinations of shape and position tolerances, with such products being used in the semiconductor industry, (test) instrument engineering, laser technology and the medical industry by respected Benelux and German partners.

Special high-performance metals

Processing metals and high-alloy chrome-nickel steels that are very difficult to machine is a speciality. These special high-performance metals, such as Titanium, Hastelloy, Tungsten, Inconel and Invar, are used in extreme conditions that place very high demands on wall thickness, shape and position tolerances and finish. The company has in-house capacity to carry out many of the processes required in advanced precision engineering; (hard) milling, (hard) turning, surface and profile grinding, electrical discharge machining. Hittech Bihca also has an extensive network of qualified suppliers.

Measuring

Hittech Bihca has a specially equipped measuring room featuring all the facilities required for micron-level verification of the specified levels of precision. Thanks to accurate instruments, all products are supplied with a test report or quality certificate, if required.



Postbus 197, NL-7100 AD Winterswijk
Verlengde Morsestraat 25, NL-7101 ND Winterswijk

T: +31 (0) 543 551 212
F: +31 (0) 543 520 585

E: info@bihca.nl
I: www.hittech.nl